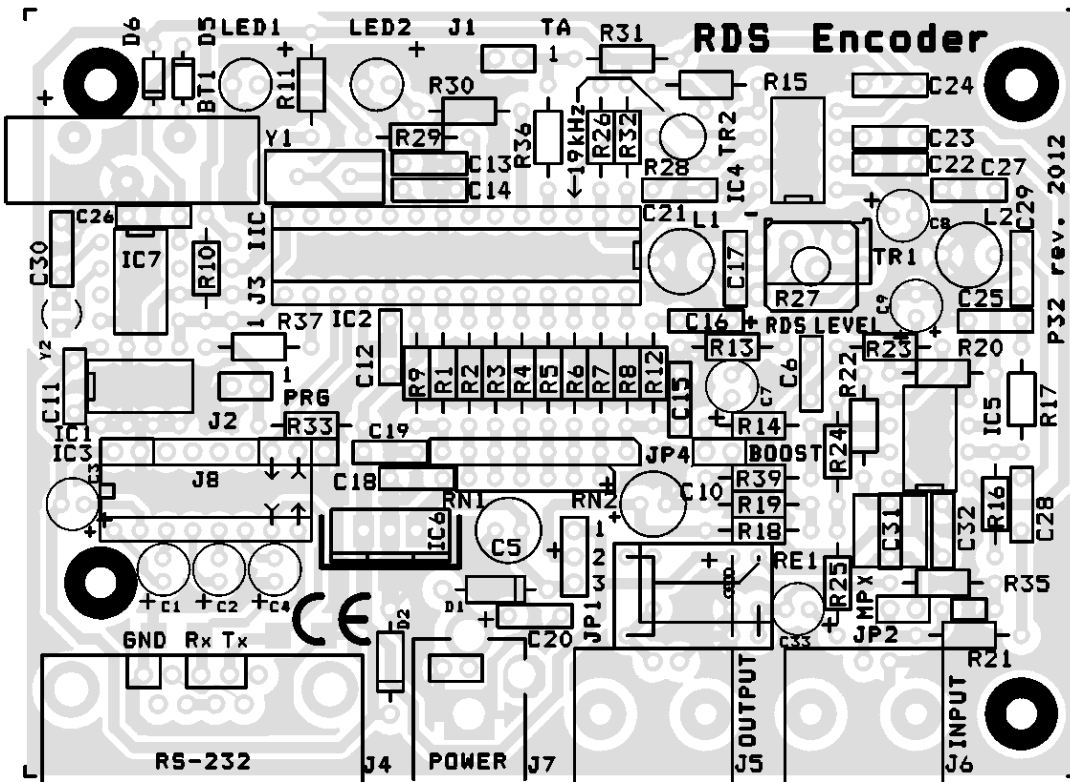


Title	PIRA32 RDS Encoder
Size	A
Document Number	Rev. 2012
Date:	23rd of September, 2015
Sheet	1 of 1
Rev	

Don't forget to initialize the device before first use: In the MagicRDS: Options – Special – Initialize.



IC1 – 24LC256–I/P
 IC2 – PIRA32 Microcontroller (in socket)
 IC3 – MAX232 (in socket)
 IC4 – LM567
 IC5 – TLC272
 IC6 – 7805
 IC7 – PCF8563P

D1, D2 – 1N4007
 D3, D4 – LED 5mm
 D5, D6 – 1N4148
 Y1 – 4.332 MHz crystal
 Y2 – 32.768 kHz crystal
 L1 – 09P-331K (330 uH)
 L2 – 09P-152J (1.5 mH)
 RE1 – signal relay
 J4 – CANON 9F connector
 J5, J6 – BNC connector

C1, C2, C3, C4 – 1u (min. 50V, E, Ø 5mm)
 C5, C10 – 100u (min. 25V, E, Ø 6.3mm)
 C6, C11, C12, C18, C19, C20, C24, C26, C32 – 100n (C)
 C7, C8 – 10u (min. 35V, E, Ø 5mm)
 C9, C33 – 100u (min. 16V, E, Ø 5mm)
 C13, C14, C30 – 22p (C)
 C15, C16, C25 – 4n7 (P)
 C17 – 22n (5%, P)
 C21 – 3n3 (P)
 C22 – 220n (P)
 C23, C29 – 1n (C)
 C27 – 47n (5%, P)
 C28 – 330p (C)
 C31 – 4u7/3u3 (P)

BT1 – CR2032 battery in vertical socket
 J7 – DC power connector

R1, R2, R3, R4, R5, R6, R7, R8, R9, R10, R11, R12, R13, R17, R29, R30, R36, R37 – 2k
 R14, R19, R26, R31, R32, R33, R39 – 10k
 R15, R18, R22 – 15k
 R16, R20, R21, R24 – 33k
 R23 – 4k7
 R25 – 91R
 R27 – trimmer 1k (vertical or horizontal)
 R28 – trimmer 5k (horizontal)
 R35 – 150k
 RN1 – 3x 1k resistor network
 RN2 – 4x 1k resistor network

102 = 1n	331 = 330p
104 = 100n	332 = 3n3
223 = 22n	472 = 4n7
224 = 220n	473 = 47n
.22 = 220n	22 = 22p

