

This guide describes how to install the Analfm software for the P75/P175 FM Analyzer.

Step 1 – USB driver installation

- *Notes:*
Pure RS-232 connection never requires any driver. If you don't use USB, skip this step and go to step 2. In Vista/Seven make sure you are logged in as administrator and User Account Control (UAC) is disabled.

- **If you use external USB to RS-232 adapter:**

Install the USB driver using the instructions provided on the driver CD for the USB to RS-232 adapter.

Note: USB to RS-232 adapter does not provide power supply for the device. Either external power supply or batteries are required.

- **If you use built-in USB interface (P175 only):**

Install the USB driver using the instructions provided on the CD or at the FTDI website:

<http://www.ftdichip.com/Support/Documents/InstallGuides.htm>

The drivers are placed either on the CD or at the FTDI website:

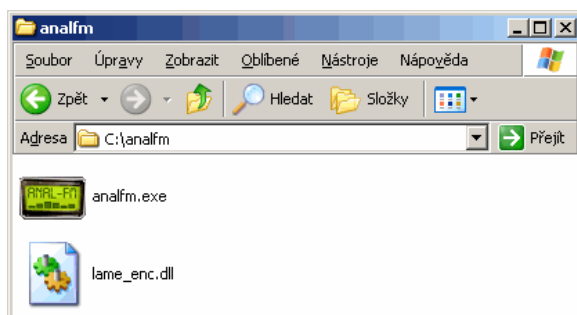
<http://www.ftdichip.com/Drivers/VCP.htm>

Use the driver that is given for your operating system.

Note: The USB port of your PC must be rated to full 500 mA current! When supplying the unit with USB bus, it is a better choice to connect the unit to the USB interface on the main board. Supplies for pocket USB hubs and for some USB interfaces of lap-top and desk top computers are not sufficient and an external power supply is necessary.

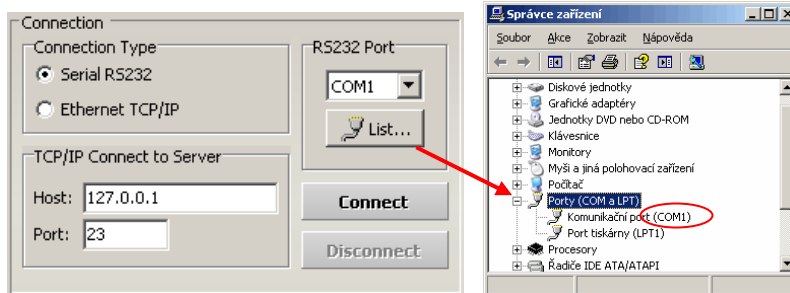
Step 2 – Copying the software

- Create a new folder on your harddisk, for example C:\analfm
- Copy the analfm files from the CD or download it from http://pira.cz/fm_broadcast_analyzer/analfm.zip and unzip (copy) the files to the folder created before.
- Finally you should see the files similar way as on the picture



Step 3 – Establishing the connection

- Run the software by double-clicking on the analfm.exe file. Make sure the FM analyzer is connected and powered.
- Go to Setup card and choose the COM port where the FM analyzer is connected. This may be either physical port of the PC (if using pure RS-232 connection) or virtual port (if using USB connection). Click on the List button if you don't know the COM port number.



- Click on Connect button.
- Select any frequency and click on Tune button. Check the analyzer's LCD display if the frequency matches. The communication is now established. The software use is described in the technical manual.

Notes:

To install the RDS Spy Radio Data System decoder, visit <http://rdsspy.com>

The Analfm software is no longer being developed. New software exists, called 'FM Scope'. Visit http://pira.cz/fm_broadcast_analyzer/, section Software.